

DDShadeConcept[®]

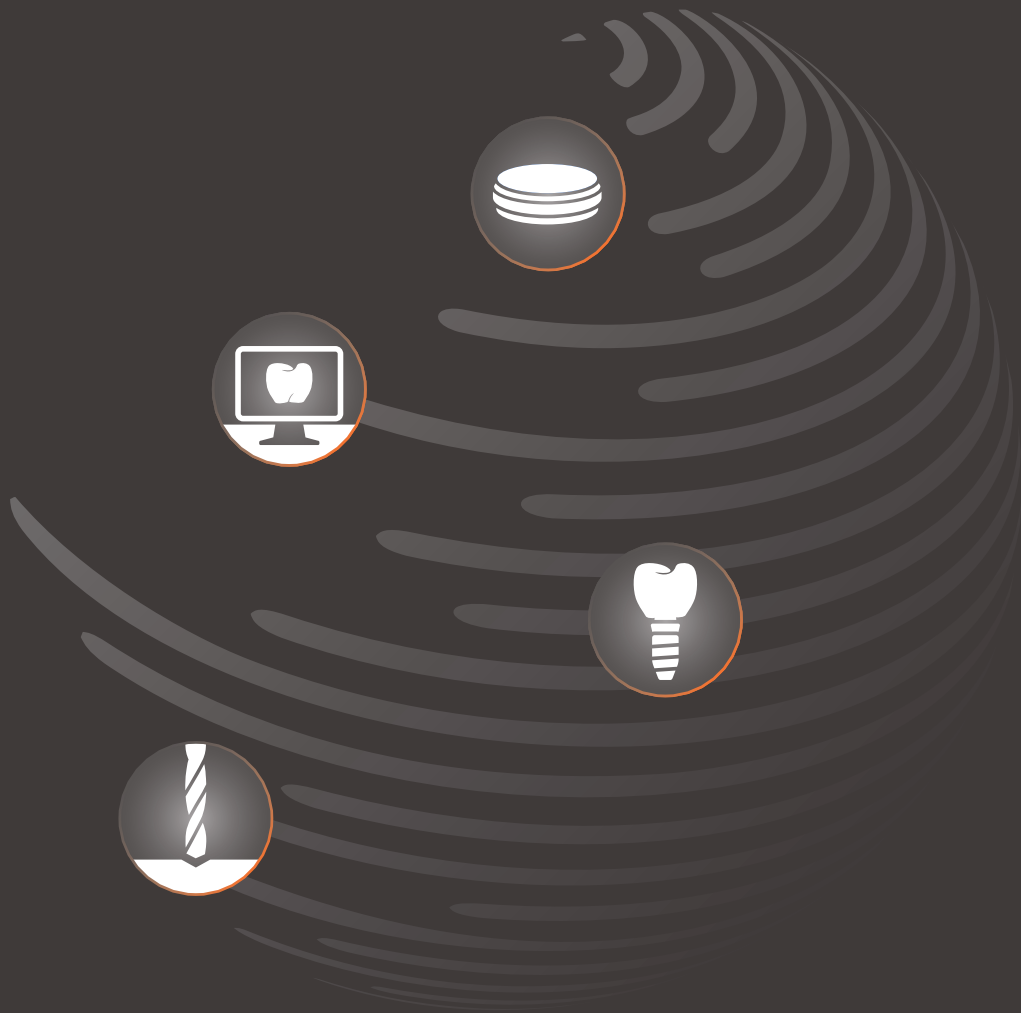
Coloring solutions for each workflow



CLOSE TO YOU



Welcome to **your** Universe



Materials

Technologies

Implant Components

Milling Services



DDShadeConcept[®]

Color solutions for all workflows

With the DD Shade Concept[®] set, Dental Direkt puts at your fingertips everything that you need to satisfy all the individual requirements on your patient work. With the three liquid-based dentin colors plus the incisal and effect colors, you always have complete control over your color results and can be sure of the reproducibility of accurate colors as per the VITA[®] shade guide.

DD Shade Concept®

The overall aesthetics of dental restorations are defined by the shape, size, and color. We developed the DD Shade Concept® with the aim of giving them optimal light dynamics and translucency and creating them in a reproducible manner. With the three liquid-based dentin coloring systems plus incisal and effect colors, we offer an ideal color system coordinated to the different properties of our four types of zirconia. The solution for your personal requirements with all aesthetic possibilities.



DD Bio ZX² and DD Pro Shade Z, cut back, minimal incisal layering, 2 firings, time expenditure of time/individualisation 30 min.

Multi Additive Technology

Coloring effects are achieved by the introduction of selected ions from rare soils and transition metals into the zirconium matrix. We describe the balanced formula of the ions and their homogeneous distribution as Multi Additive Technology. When light falls on the surface, certain wavelengths are absorbed and others reflected – this phenomenon in the modified zirconium structure creates the brilliant color effects.



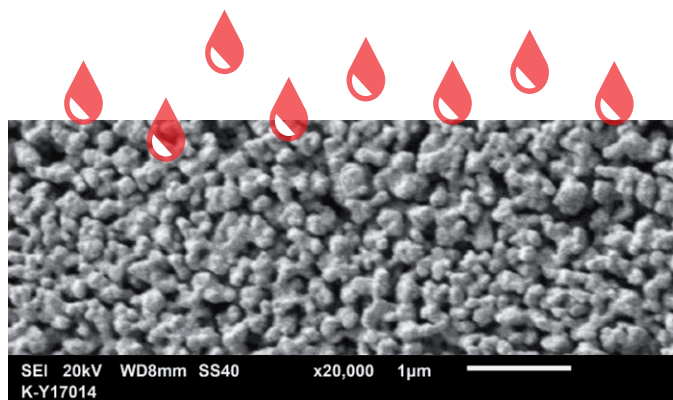
Ion incorporation in the grain boundaries:
Dopant 1, Dopant 2, Dopant 3

Bridge: DD cube ONE® and DD Pro Shade Z, cut back, after sintering

Perfect combination

Laboratory-specific processing parameters such as the sintering temperature and the quantity of liquid introduced affect the intensity, translucency, and chroma of the restoration. The DD Shade Concept® achieves perfect light refraction and makes it possible to avoid negative effects on the color as a result of too high or too inhomogeneous accumulations of pigment elements. During product development, the focus was on the perfect result in the combination of the liquid and zirconia. External studies confirm that the dyeing of the zirconia has no negative effects on its strength.

The symbiosis of the two materials results in high process stability and optimal color effect.



REM pre-sintered structure
Definition of form, size and distribution in the porous canals in pre-sintered blanks. This results in a specific capillary effect, which is perfect for the viscosity and infiltration of the liquid.

Finishing touches

The DD Art Elements incisal liquids allow you to regulate the brightness in the incisal third, ensure a smooth color transition, and achieve an increase in translucency compared with the dentin body. The effect colors – applied using brush techniques – are suitable for occlusal, incisal, and cervical areas as well as for gingival coloring. All the liquids are dyed with biopigments for orientation and control during use.





VITA® A2



DDBasicShade
Universal Dentine Liquid



DDBioZ



← more grayish



DDBioZX²



← more grayish



DDcubeONE®



← more grayish



DDcubeX²®



← more grayish

Recommendation 

Color concept: Intensive chroma, higher gray value
Luminance: LESS brightness
DD recommendation: Minimal layering (cut back), full veneering, combination of both techniques



DDProShade Z
Special Dentine Liquid



DDProShade C
Special Dentine Liquid



more reddish



more reddish



more reddish



more yellowish



Color concept: Less intensive chroma, warmer shade

Luminance: MORE brightness

DD recommendation: Combination with DD cube ONE® (HT+) and DD cubeX2® (SHT)
Perfect basis for individual painting of monolithic crowns and bridges
(DD contrast® color and form concept by Andreas Nolte) or minimal layering (cut back)



DDBasicShade

Universal Dentine Liquid

Color concept: VITA® classic (dentine)

Chroma: Intensive chroma –
higher gray value

Luminance: Less brightness

Recommended for:

- DD Bio Z 3Y-TZP-A High Strength **HS**
- DD Bio ZX² 3Y-TZP-LA High Translucent **HT**
- DD cube ONE® 4Y-TZP High Translucent Plus **HT+**
- DD cubeX® 5Y-TZP Super High Translucent **SHT**


Recommended use:

- Minimal layering (cut back)
- Full veneering
- Combination of both techniques

16 dentine colors according to VITA® and 3 bleach colors

Color according to VITA®	Order-no. 30 ml	Order-no. 100 ml
0M1	LBS300M1	LBS1000M1
0M2	LBS300M2	LBS1000M2
0M3	LBS300M3	LBS1000M3
A1	LBS30A1	LBS100A1
A2	LBS30A2	LBS100A2
A3	LBS30A3	LBS100A3
A3,5	LBS30A35	LBS100A35
A4	LBS30A4	LBS100A4
B1	LBS30B1	LBS100B1
B2	LBS30B2	LBS100B2
B3	LBS30B3	LBS100B3
B4	LBS30B4	LBS100B4
C1	LBS30C1	LBS100C1
C2	LBS30C2	LBS100C2
C3	LBS30C3	LBS100C3
C4	LBS30C4	LBS100C4
D2	LBS30D2	LBS100D2
D3	LBS30D3	LBS100D3
D4	LBS30D4	LBS100D4

Coloring solution to be used with white Dental Direkt zirconium oxide milling blanks.

 Consult instructions for use.



DDProShadeZ

Special Dentine Liquid

Color concept: VITA® classic (dentine)

Chroma: Less intensive chroma, warmer shade

Luminance: More brightness

16 dentine colors according to VITA® and 3 bleach colors

Color according to VITA®	Order-no. 30 ml	Order-no. 100 ml
0M1	LPSZ300M1	LPSZ1000M1
0M2	LPSZ300M2	LPSZ1000M2
0M3	LPSZ300M3	LPSZ1000M3
A1	LPSZ30A1	LPSZ100A1
A2	LPSZ30A2	LPSZ100A2
A3	LPSZ30A3	LPSZ100A3
A3.5	LPSZ30A35	LPSZ100A35
A4	LPSZ30A4	LPSZ100A4
B1	LPSZ30B1	LPSZ100B1
B2	LPSZ30B2	LPSZ100B2
B3	LPSZ30B3	LPSZ100B3
B4	LPSZ30B4	LPSZ100B4
C1	LPSZ30C1	LPSZ100C1
C2	LPSZ30C2	LPSZ100C2
C3	LPSZ30C3	LPSZ100C3
C4	LPSZ30C4	LPSZ100C4
D2	LPSZ30D2	LPSZ100D2
D3	LPSZ30D3	LPSZ100D3
D4	LPSZ30D4	LPSZ100D4


Recommended for:

- DD Bio Z 3Y-TZP-A High Strength HS
- DD Bio ZX² 3Y-TZP-LA High Translucent HT
- DD cube ONE® 4Y-TZP High Translucent Plus HT+

Recommended use:

- Perfect basis for individual painting of monolithic crowns and bridges made of DD cube ONE® (HT+) (DD contrast® color and form concept by Andreas Nolte)
- Minimal layering (cut back)

Coloring solution to be used with white Dental Direkt zirconium oxide milling blanks.

 Consult instructions for use.



DDProShadeC

Special Dentine Liquid

Color concept:	VITA® classic (dentine)
Chroma:	Less intensive chroma, warmer shade
Luminance:	More brightness

Recommended for:

- DD cubeX® 5Y-TZP Super High Translucent **SHT**


Recommended use:

- Perfect basis for customized staining of monolithic crowns and bridges made of DD cube cubeX²® (SHT) (DD contrast® color and form concept by Andreas Nolte)
- Minimal layering (cut back)

16 dentine colors according to VITA® and 3 bleach colors

Color according to VITA®	Order-no. 30 ml	Order-no. 100 ml
0M1	LPSC300M1	LPSC1000M1
0M2	LPSC300M2	LPSC1000M2
0M3	LPSC300M3	LPSC1000M3
A1	LPSC30A1	LPSC100A1
A2	LPSC30A2	LPSC100A2
A3	LPSC30A3	LPSC100A3
A3,5	LPSC30A35	LPSC100A35
A4	LPSC30A4	LPSC100A4
B1	LPSC30B1	LPSC100B1
B2	LPSC30B2	LPSC100B2
B3	LPSC30B3	LPSC100B3
B4	LPSC30B4	LPSC100B4
C1	LPSC30C1	LPSC100C1
C2	LPSC30C2	LPSC100C2
C3	LPSC30C3	LPSC100C3
C4	LPSC30C4	LPSC100C4
D2	LPSC30D2	LPSC100D2
D3	LPSC30D3	LPSC100D3
D4	LPSC30D4	LPSC100D4

Coloring solution to be used with white Dental Direkt zirconium oxide milling blanks.

 Consult instructions for use.



DDArtElements

Recommended for:

- DD Bio Z
- DD Bio ZX²
- DD cube ONE[®]
- DD cubeX[®]

Recommended use:


- Universally applicable
- With all DD dentin liquids
- With all DD zirconia types

Effect colors

For individualisation, to shade the dentine colors, or simply for the characterization of e.g. fissures, incisal areas or gingival areas.

		
light pink LAE30LP	purple LAE30P	blue LAE30B
		
yellow LAE30Y	orange LAE30O	light brown LAE30LB
		
dark brown LAE30DB	light grey LAE30LG	dark grey LAE30DG
		
graphite LAE30G		

Coloring solution to be used with white Dental Direkt zirconium oxide milling blanks.

 Consult instructions for use.

Incisal

For occlusal and incisal individualisation

Color		Order-no. 15 ml
SA1	for painting (OM3 · A1 · A2 · B1 · B2)	LAE15SA1
SA2	for painting (A3 · A3.5 · A4 · B3 · B4)	LAE15SA2
SC1	for painting (C1 · C2 · D2)	LAE15SC1
SC2	for painting (C3 · C4 · D3 · D4)	LAE15SC2
SO	for painting (OM1 · OM2) for dipping (all dentine colors)	LAE15SO
SO Bright	for painting (OM1 · OM2) for dipping (all dentine colors) developed specially for DD cube ONE [®] .	LAE15SOB

Incisal SO/SO Bright

Optimized for efficient dipping technique



SO Bright produces more intense brightness in the incisal area. Recommended for use with DD cube ONE[®].

Incisal SA/SC

Optimized for individual brush technique



Vario

To brighten the dentine colors


Article	Order-no. 30 ml
Variation liquid	LAE30V

DDShadeConcept® sets



Coloring sets	Order-no.	Content
DD Basic Shade-Set (Ideal for DD Bio Z, DD Bio ZX², DD cube ONE® and DD cubeX²®)	LBS001	16 dentine colors A1 – D4 à 30 ml 5 incisal colors SA1 – SO à 15 ml + 40 applicators
DD Pro Shade C-Set (Ideal for DD cubeX²®)	LPSC001	16 dentine colors A1 – D4 à 30 ml 5 incisal colors SA1 – SO à 15 ml + 40 applicators
DD Pro Shade Z-Set (Ideal for DD Bio Z, DD Bio ZX² and DD cube ONE®)	LPSZ001	16 dentine colors A1 – D4 à 30 ml 5 incisal colors SA1 – SO à 15 ml + 40 applicators
DD Art Elements-Set	LAE001	5 incisal colors à 15 ml 10 effect colors à 30 ml 1 vario liquid à 30 ml + 40 applicators

Coloring solution to be used with white Dental Direkt zirconium oxide milling blanks.

 Consult instructions for use.

Names identified with ® are registered brands and/or trademarks which are the intellectual property of the respective manufacturers.

Rev. 02_2019/09