

LOUPES *semi-custom*

See.  
What is possible.



***I.C. LERCHER***

# LOUPE SYSTEMS *semi-custom*

*In 4 easy steps  
to individual glasses.*



# Individuality quite simple.

With our C-loupes in *SPORT-FRAME*.

With the semi-custom system, you can create your individual loupe in just four steps. Over 30 years of experience make it possible to set standard values that come very close to custom loupe glasses. The result is an amazingly easy to custom system. It enables different magnifications with the best wearing comfort and highest quality of vision.



## Step 1

Choose one of the loupes.



VISIONX° 3.0

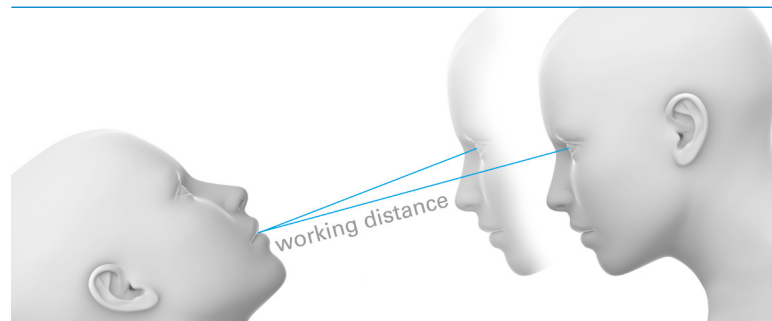
XC-View 2.8

MC-View 2.8

TC-View 2.5

## Step 2

Decide which of the **four working distances** best suits your ergonomic preferences when treating patients.

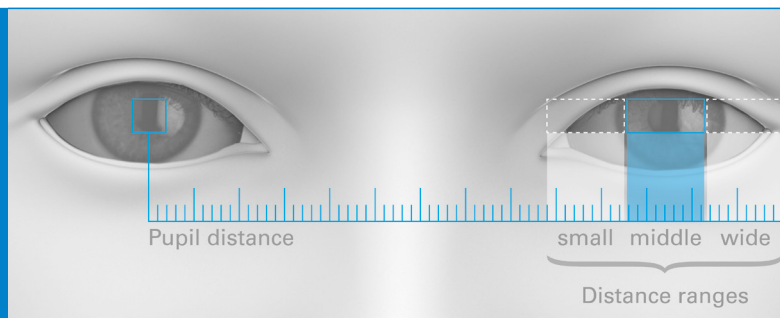


## Facts and Figures.

	VISIONX C 3.0	VISIONX C 3.8	XC-VIEW 2.8	MC-VIEW 2.8	TC-VIEW 2.5
<i>Optical parameters</i>					
Magnification	3.0	3.8	2.8	2.8	2.5
Working distance [ mm ]	360 - 540	360 - 540	360 - 540	360 - 540	360 - 420
Field of view [ mm ]	100	45	110	90	100
Depth of field [ mm ]	180	70	200	170	160
Dioptre compensation	With RX-Clip in Frame				
<i>Housing</i>					
Aluminium	•	•	•	•	•
Glas lenses	•	•	•	•	•
Waterproof	•	•	•	•	•
Weight per pair [ g ]	24	29	43	34	22
<i>Frame combination</i>					
CURVED-FRAME					
TITAN-FRAME					
SPORT-FRAME	•	•	•	•	•

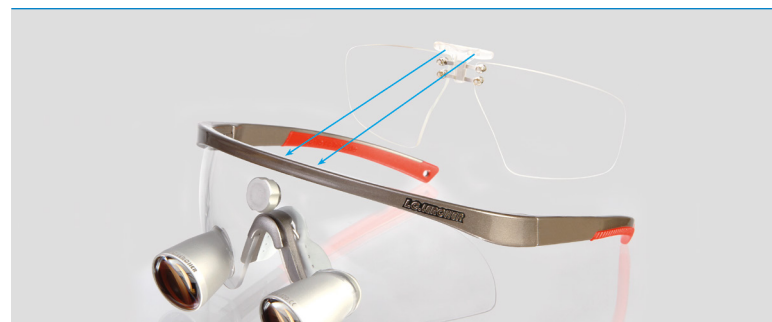
## Step 3

Have the distance of your pupils measured. This will provide you with the information needed to select one of the **three distance ranges** that best suits your facial features.



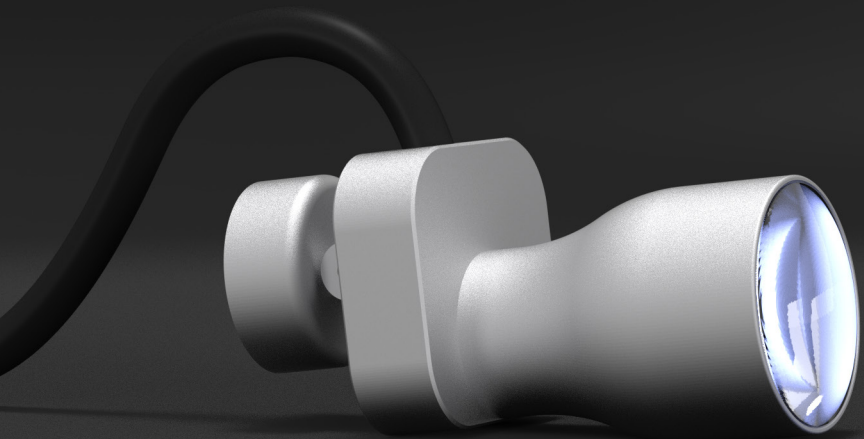
## Step 4

As an optional extra, you can add the customised dioptre compensation clip (produced separately for you) to the C loupe eyewear.



# LIGHTING SYSTEMS

*Bring light into  
the dark.*



# More light. For more details.

*Compact, lightweight and ultra-bright.*

The **LED-LIGHT CIRCLE** has been specially developed for medical use. It produces an extremely bright light that provides uniform, shadow-free illumination.

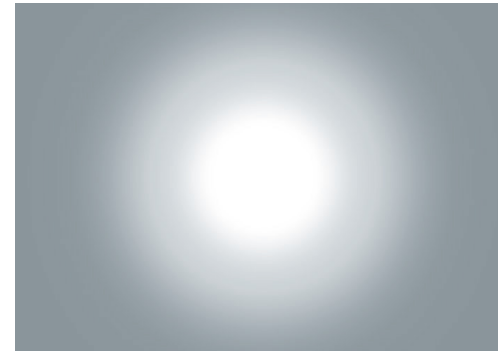
Thanks to its glass lens system, the **LED-LIGHT CIRCLE** guarantees a perfectly illuminated, sharp-edged,

true-colour field of vision without dazzling the patient. The axial connection to the loupe provides a direct link to the field of vision, ensuring that the treatment area is perfectly illuminated in every situation. Even when working in difficult-to-access areas, the **LED-LIGHT CIRCLE** ensures you are never in the dark.

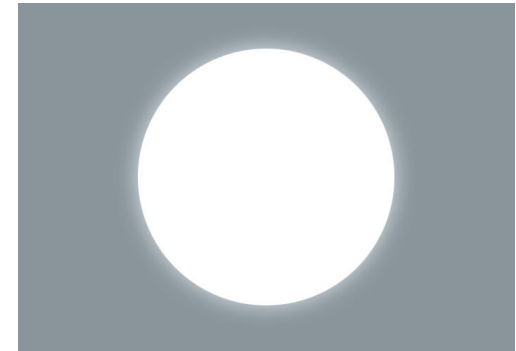
# LEDLIGHTCIRCLE

The integrated LED technology combined with the lithium-ion battery (supplied) means it can be used without distracting waveguides. This protects your neck and helps you to work in a more ergonomic way.

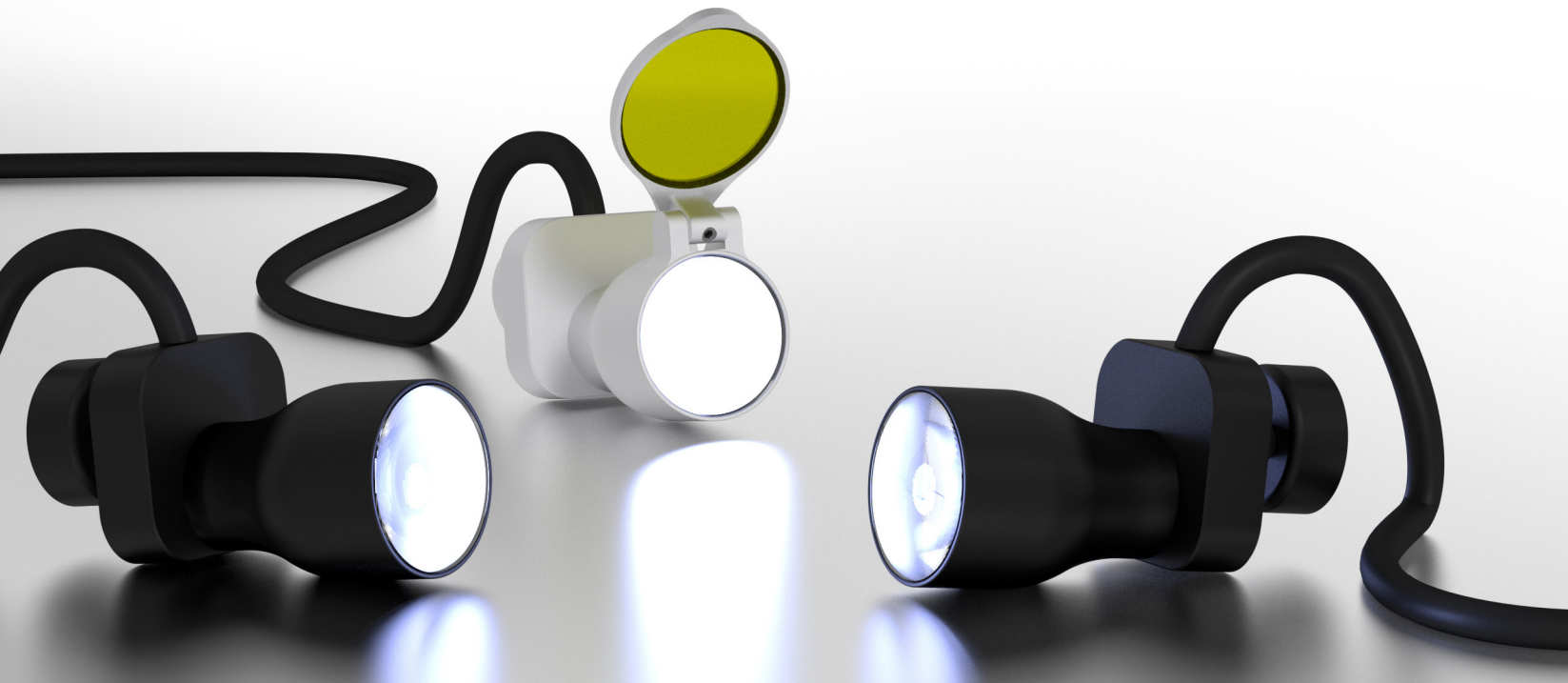
And at just 12 grams, the lightweight **LED-LIGHT CIRCLE** is ideal for all kinds of applications, including the operating theatre and treatment room – and even mobile use.



conventional LED-system



LED-LIGHT CIRCLE



## Facts and Figures.

General	
Technology	LED
Brightness levels	20.000 / 30.000 / 60.000 LUX
Colour temperature	5700 K (daylight)
Adaptor system	magnetic (available for all types of surgical loupes)
Battery	
Technology	Li-ion, rechargeable
Battery life	7 hours at 60.000 LUX
Housing	
Material	Aluminium
Lens system	Glas
Colours	silver, black
Weight	12 g
Width	20 mm
Height	21 mm
Depth	40 mm
Filter	
without orangefilter	•
with orangefilter	•



Designed & Manufactured  
in Germany

Im Sägenloh 8  
78333 Stockach

Fon +49 (0) 7771 - 914 628-80

info@iclercher-solutions.com  
www.iclercher-solutions.com

